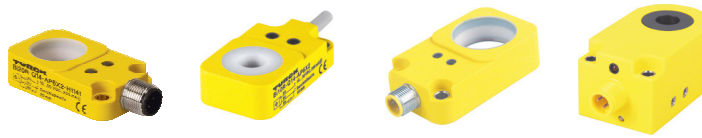


Inductive Ring Sensors



Housing Style	Part Number	ID Number	Minimum Target Diameter	Ring Dia. (mm)	Output	
14 mm - Rectangular, Ring Sensor, eurofast® Quick Disconnect 	Bi 6R-Q14-AN6X2-H1141	M1407020	≥ 2 mm	6	Static 3-Wire DC NPN	
	Bi10R-Q14-AN6X2-H1141	M1407120	≥ 2 mm	10		
	Bi15R-Q14-AN6X2-H1141	M1407220	≥ 3 mm	15		
	Bi20R-Q14-AN6X2-H1141	M1407320	≥ 4 mm	20		
		Bi 6R-Q14-AP6X2-H1141	M1407000	≥ 2 mm	6	Static 3-Wire DC PNP
		Bi10R-Q14-AP6X2-H1141	M1407100	≥ 2 mm	10	
		Bi15R-Q14-AP6X2-H1141	M1407200	≥ 3 mm	15	
		Bi20R-Q14-AP6X2-H1141	M1407300	≥ 4 mm	20	
		Bi10R-Q14-AN6X2	M1406120	≥ 2 mm	10	Static 3-Wire DC NPN
		Bi15R-Q14-AN6X2	M1406220	≥ 3 mm	15	
		Bi20R-Q14-AN6X2	M1406320	≥ 4 mm	20	
			Bi10R-Q14-AP6X2	M1406100	≥ 2 mm	10
Bi15R-Q14-AP6X2			M1406200	≥ 3 mm	15	
Bi20R-Q14-AP6X2			M1406300	≥ 4 mm	20	
20 mm - Rectangular, Ring Sensor, eurofast Quick Disconnect 	Bi30R-Q20-AN6X2-H1141	M1407520	≥ 6 mm	30	Static 3-Wire DC NPN	
	Bi30R-Q20-AP6X2-H1141	M1407500	≥ 6 mm	30	Static 3-Wire DC PNP	
30 mm - Rectangular, Ring Sensor, eurofast Quick Disconnect 	Bi 6R-W30-DAN6X-H1141	M1403700	≥ 0.6 mm	6	Dynamic 3-Wire DC NPN	
	Bi 10R-W30-DAN6X-H1141	M1403900	≥ 1 mm	10		
	Bi 15R-W30-DAN6X-H1141	M1404100	≥ 1.5 mm	15		
	Bi 20R-W30-DAN6X-H1141	M1404300	≥ 2 mm	20		
	Bi 30R-W30-DAN6X-H1141	M1404501	≥ 3 mm	30		
		Bi 6R-W30-DAP6X-H1141	M1403600	≥ 0.6 mm	6	Dynamic 3-Wire DC PNP
		Bi 10R-W30-DAP6X-H1141	M1403800	≥ 1 mm	10	
		Bi 15R-W30-DAP6X-H1141	M1404000	≥ 1.5 mm	15	
		Bi 20R-W30-DAP6X-H1141	M1404200	≥ 2 mm	20	
		Bi 30R-W30-DAP6X-H1141	M1404500	≥ 3 mm	30	

For detailed sensor specifications see Section M.
Normally Closed versions available upon request, consult factory.